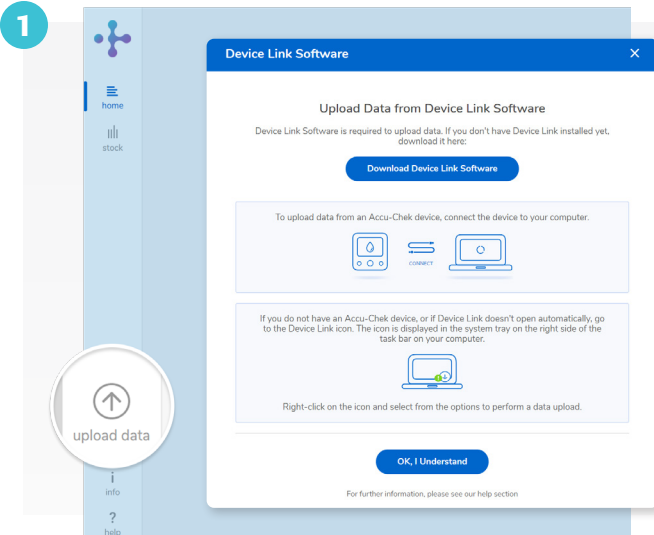


# Installing Device Link on Windows



## Download Device Link software

### Accessing data starts here.

First, sign in to your RocheDiabetes Care Platform account.

Then, click the **Upload Data** icon.

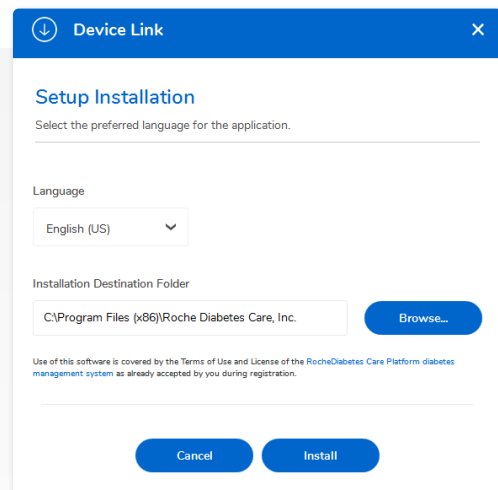
In the pop-up, click **Download Device Link Software**.

Follow installation steps based on your operating system.

## 1 Install Device Link software—Windows

*Install must be done by a user with admin rights.*

1. Double-click the **downloaded installation file** (Setup.exe).
2. If needed, select the language and change the installation destination folder.
3. Click **Install**.



3

Select installation mode

Hospital / Practice module

Patient mode (single user)

Ok



Device Link

Connect Device [Need Help?](#)

Select the device type that is uploading data

ACCU-CHEK®  
Accu-Chek Devices

OTHER DEVICES BRANDS  
Powered by SINOVO  
Other Devices

Cancel



Device Link

Installation Complete

✓ Device Link has successfully been installed. Device Link will be started once setup exits.

Click "Finish" to exit.

Finish

## Select installation mode

**Hospital/Practice Mode** is the required mode for the HCP. The base installation includes a default set of device drivers.

After this, the setup wizard allows an IT administrator to install drivers for additional compatible devices\*

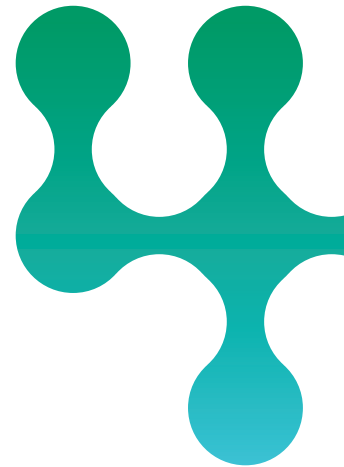
*\*Selecting a large number of device drivers may increase installation time and effort.*

**Patient Mode** allows your patients to download devices from their home computers.

### Finish installation

A message notifies you when the installation is complete.

Click **Finish** to exit.



Roche Diabetes Care is aware the platform may need to undergo a Data Privacy Impact Assessment. Please contact your Roche Sales Representative if you would like assistance during this process.

ACCU-CHEK, ROCHE DIABETES CARE, and ROCHEDIABETES CARE PLATFORM are trademarks of Roche. All other product names and trademarks are the property of their respective owners.  
© 2020 Roche, 348-56685E-1020



**Want more information?**

diabetescareplatform.com | 1-800-628-3346

Or work with your sales rep directly.